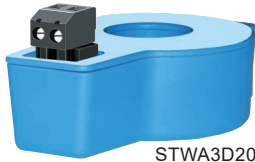


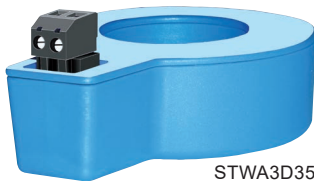
# Current Transformer STWA3D

for use with RCM1000V

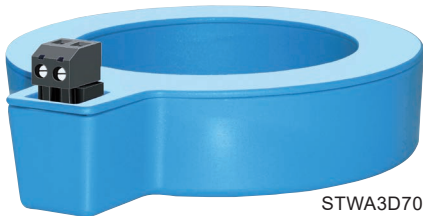
## STWA3D



STWA3D20



STWA3D35



STWA3D70



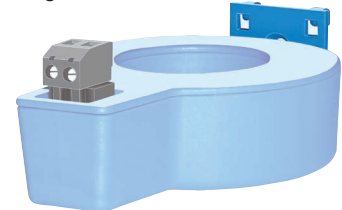
STWA3D125

The current transformers STWA3D for use with residual current monitor RCM1000V are available with 4 different inside diameters.

STWA3D20-70 can be snapped on a DIN-rail, vertically or horizontally or be fixed with screws. The Bracket for mounting is included.

STWA3D125 can only be mounted with screws.

Bracket for mounting 20 - 70 mm



2

### Part numbers:

<b>S225725</b>	STWA3D20	20 mm	∅ Inside
<b>S225726</b>	STWA3D35	35 mm	∅ inside
<b>S225727</b>	STWA3D70	70 mm	∅ inside
<b>S225728</b>	STWA3D125	125 mm	∅ inside

Option:

Split core current transformer upon request.

## Technical Data

Rated current $K_n$ primary/secondary	10 A / 0,0167 A
Rated power	50 mVA (180 Ohm)
Frequency range	42 Hz ... 3 kHz
Rated ambient temperature range	-5 °C ... +70 °C
Temperature storage	-25 °C ... + 70 °C
Rated short-time thermal current $I_{th}$	2,4 kA / 1 s
Rated continuous residual current	40 A
Nominal current $I_{DYN}$	6 kA / 40 ms
Nominal voltage	0,8 kV
Rated impulse voltage	8 kV
Contamination level	III

Dimensions	STWA3D20	STWA3D35	STWA3D70	STWA3D125
Inside diameter	20 mm	35 mm	70 mm	125 mm
X * Y * Z (mm)	53 * 49 * 87	68 * 49 * 103	103 * 49 * 137	173 * 63 * 200
Weight	120 g	160 g	290 g	910 g