

Unità di potenza pneumo-idraulica – versione UPK

Pneumo-hydraulic power unit – UPK version

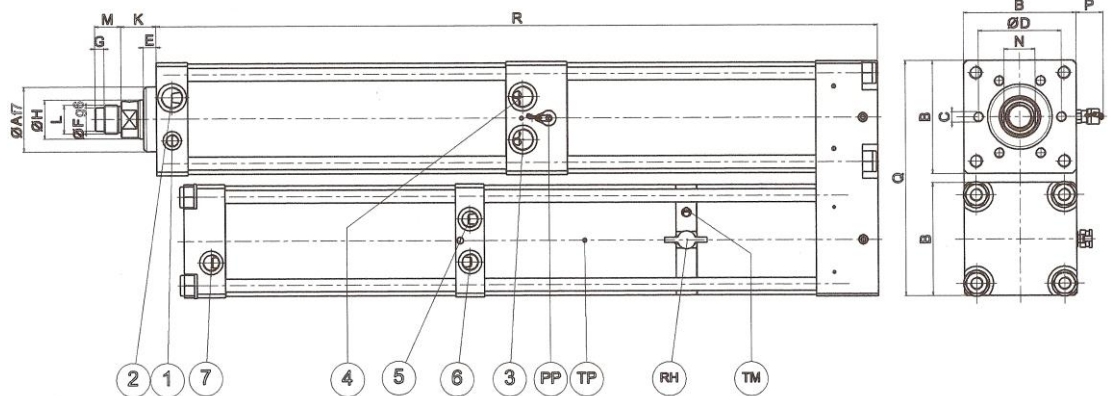
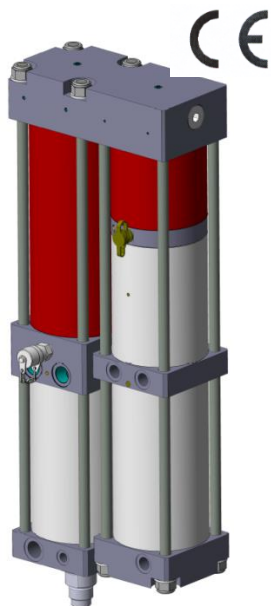


Versione in parallelo - compatta
 5 potenze disponibili da 12 a 301 kN
 pressione aria 6 - 9 bar
 corsa totale 100 - 200 mm
 corsa lavoro 4 - 15 mm
 corse speciali a richiesta

In parallel unit – compact version
 5 powers available from 12 to 301 kN
 6 - 9 bar air pressure
 100 - 200 mm total stroke
 4 - 15 mm work stroke
 special strokes under demand

DATI TECNICI E DIMENSIONI • SPECIFICATIONS AND DIMENSIONS

versione version	sforzo force max kN	①	②	③	④	⑤	⑥	⑦	
UPK.20	19	1/8	1/4	1/4	1/4	1/8	1/4	1/4	
UPK.40	35		3/8	3/8	3/8	1/4			
UPK.80	82		1/2	1/2	1/2	3/8	3/8	3/8	
UPK.150	140					1/2			1/2
UPK.300	301					1/2			1/2



DATI TECNICI E DIMENSIONI • SPECIFICATIONS AND DIMENSIONS

versione version	pressione max aria max air pressure bar	potenza power kN	corsa totale total stroke mm	corsa lavoro work stroke mm	sforzo lavoro work effort kn 6 bar 9	sforzo avvicinam. approach. effort daN- 6 bar	sforzo ritorno return effort daN- 6 bar	Ø A	B	C	D	E	Ø F	G	Ø H	K	L	M	N	P	Q	R	
UPK	6	-	100 200	6	19	-	182	168	40	71	6M8X12	54	10	-	-	20	26	M16X1,5	15	16	38	145	345
	-	9	100 200	10	12,7	17,6																	345
UPK	6	-	100 200	4 6	35	-	250	220	50	87	6M8X15	64	10	18	7	30	28,5	M22X2	20	24	38	181	358
	-	9	100 200	5,5 12	25	35,7																	358
UPK	6	-	100 200	6	82	-	450	375	70	111	6M10X16	88	10	26	7	45	35	M30X2	25	36	38	229	530
	-	9	100 200	12	47,6	69																	530
UPK	6	-	100 200	6	140	-	700	618	75	136	6M16X25	100	15	26	7	50	36	M30X2	25	41	38	279	639
	-	9	100 200	12	92	135																	639
UPK	6	-	100 200	6 10	301	-	1125	1036	100	170	6M20X30	132	18	-	-	60	47	M39X2	35	52	38	351	777
	-	9	100 200	11 15	197	290																	777

Unità di potenza pneumo-idraulica – versione UPK

Pneumo-hydraulic power unit – UPK version



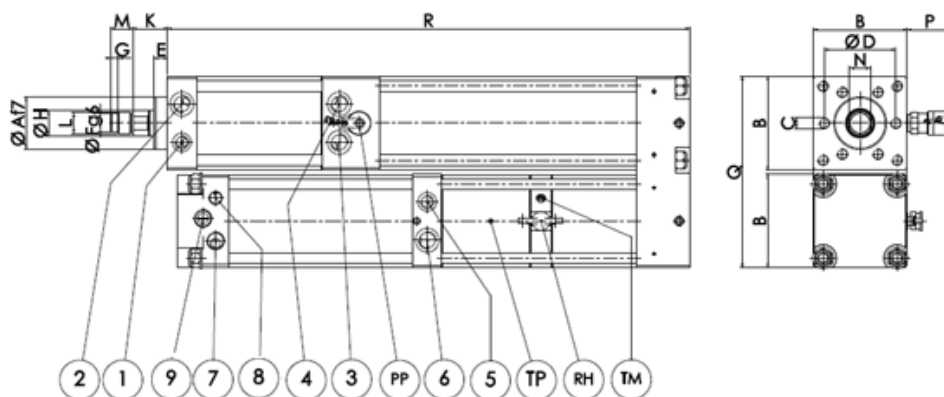
DATI TECNICI E DIMENSIONI • SPECIFICATIONS AND DIMENSIONS

VERSIONE “NG”
“NG”VERSION

versione version	sforzo force max kN	①	②	③	④	⑤	⑥	⑦	⑧	⑨
UPK.20 NG	19	1/8	1/4	1/4	1/4	1/8	1/4	1/4	1/8	1/4
UPK.40 NG	35		3/8	3/8	3/8	1/4				1/2
UPK.80 NG	82		1/2	1/2	1/2	3/8	3/8	3/8		1/2
UPK.150 NG	140									3/4



LEGENDA PAG. 1



DATI TECNICI E DIMENSIONI • SPECIFICATIONS AND DIMENSIONS

versione version	pressione max aria max air pressure bar	potenza power kN	corsa totale total stroke mm	corsa lavoro work stroke mm	sforzo lavoro work effort kn 6 bar 9	sforzo avvicinam. approach. effort daN – 6 bar	sforzo ritorno return effort daN – 6 bar	Ø A	B	C	D	E	Ø F	G	Ø H	K	L	M	N	P	Q	R	
UPK	6	-	100 200	6	19	-	182	168	40	71	6M8X12	54	10	-	-	20	26	M16X1,5	15	16	38	145	345
	-	9	100 200	10	12,7	17,6																	345
UPK	6	-	100 200	4 6	35	-	250	220	50	87	6M8X15	64	10	18	7	30	28,5	M22X2	20	24	38	181	358
	-	9	100 200	5,5 12	25	35,7																	358
UPK	6	-	100 200	6	82	-	450	375	70	111	6M10X16	88	10	26	7	45	35	M30X2	25	36	38	229	530
	-	9	100 200	12	47,6	69																	530
UPK	6	-	100 200	6	140	-	700	618	75	136	6M16X25	100	15	26	7	50	36	M30X2	25	41	38	279	639
	-	9	100 200	12	92	135																	639